

M12-Receptacle Connectors In Accordance With IEC 61076-2-101

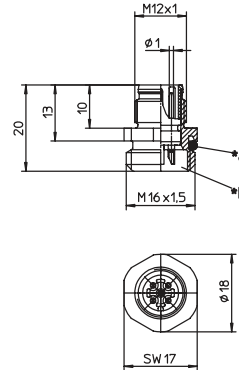
RSFM | PRSFM



Male, 3-, 4- and 5-Pole

Receptacle connector, combined FIXCON/M12 male connector for front mounting, solder connections, chassis side thread M16 x 1.5 (panel nut RSKFM 16).

RSFM



- *a O-ring enclosed separately
- *b Attention!
To ensure mechanical stability and impermeability, the wire connections must be epoxy potted after cable assembly.

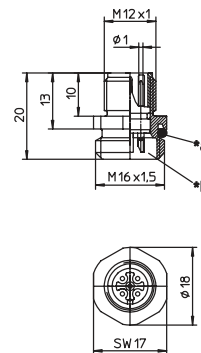


Male, 3-, 4- and 5-Pole

Receptacle connector, M12 male connector for front mounting, housing of stainless steel, solder contacts not potted, chassis side thread M16 x 1.5 (panel nut RSKFM 16)

– especially designed for use in food processing equipment –.

PRSFM



- *a O-ring enclosed separately
- *b Attention!
To ensure mechanical stability and impermeability, the wire connections must be epoxy potted after cable assembly.

Pin Assignments

Face Views / M12

3 poles



4 poles



5 poles





Be Certain with Belden

M12-Receptacle Connectors In Accordance With IEC 61076-2-101
RSFM | PRSFM

Technical Data

Environmental



Degree of protection IP 67 / NEMA 6P
 Operating temperature range RSFM: -25°C (-13°F) / +80°C (+176°F)
 PRSFM: -25°C (-13°F) / +70°C (+158°F)

Mechanical

Housing / Molded body RSFM: CuZn, nickel-plated
 PRSFM: stainless steel
 Insert RSFM: PA
 PRSFM: PBT
 Contact CuZn, pre-nickel and 0.8 microns gold-plated
 O-ring RSFM: FKM
 PRSFM: EPDM

Electrical

Contact resistance ≤ 5 mΩ
 Nominal current at 40°C 4 A
 Nominal voltage 3–4 poles 240 V
 5 poles 60 V
 Connection area must be epoxy potted.
 Rated voltage 3–4 poles 250 V
 5 poles 63 V
 Test voltage 3–4 poles 2.0 kV eff. / 60 s
 5–8 poles 1.5 kV eff. / 60 s
 Insulation resistance > 10⁹ Ω
 Pollution degree 3

Part Number	Pins	Characteristics
RSFM 3	3	 
RSFM 4	4	 
PRSFM 4		   
RSFM 5	5	 
PRSFM 5		 

Receptacles