

## M23 Field Attachable Connectors

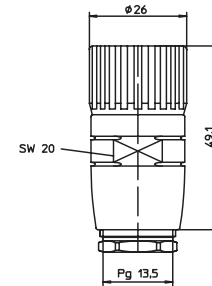
RKC.../13.5 | RKCW...13.5



### Female, 12- and 19-Pole

Field attachable connector, M23 male connector 12- and 19-pole with threaded joint, external thread, assembling with solder connections.

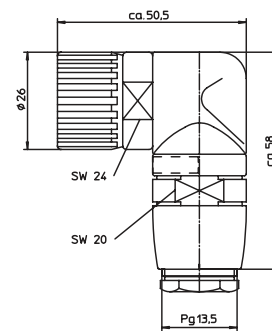
RKC.../13.5



### Female, 12- and 19-Pole

Field attachable connector, M23 male connector 12- and 19-pole, right angle with threaded joint, external thread, assembling with solder connections.

RKCW...13.5



## Pin Assignments

M23 - Male

12 poles



19 poles





# Be Certain with Belden

## M23 Field Attachable Connectors

RKC.../13.5 | RKCW...13.5

### Technical Data

#### Environmental



Degree of protection IP 67  
 Operating temperature range -40°C (-40°F) / +125°C (+257°F)

#### Mechanical

Housing / Molded body CuZn, nickel-plated  
 Insert PBT GF  
 Contact CuZn, pre-nickel and 0.8 microns gold-plated  
 Receptacle shell CuZn, nickel-plated  
 O-ring FKM  
 Mode of connection solder connection  
 Connectable conductor max. 1.0 mm<sup>2</sup>

#### Electrical

Contact resistance ≤ 5 mΩ  
 Nominal current at 40°C 12 poles 7.5 A  
 19 poles 7.5 A pin Ø 1 mm, 10 A pin Ø 1.5 mm  
 Nominal voltage 12 poles 240 V  
 19 poles 120 V  
 Rated voltage 12 poles 250 V  
 19 poles 125 V  
 Test voltage 12 poles 2.5 kV eff./ 60 s  
 19 poles 1.5 kV eff./ 60 s  
 Insulation resistance > 10<sup>9</sup> Ω  
 Pollution degree 3

Part Number		Pins	Cable Diameter Range	Characteristics
<b>Female</b>	<b>Female 90°</b>			
RKC 120/13.5	RKCW 120/13.5	12	Ø 10.0 - 14.0 mm	 
RKC 190/13.5	RKCW 190/13.5	19	Ø 10.0 - 14.0 mm	