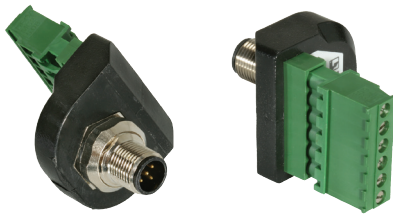


M12-Receptacle Connectors In Accordance With IEC 61076-2-101

RSF 5 TB | RKF 5 TB

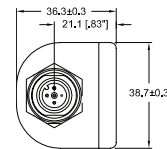


Male, 5-Pole to Terminal Block

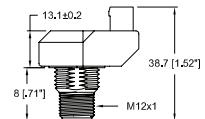
Receptacle, 5-pole, male to terminal block receptacle.

– especially suitable for panel-mount/
feedthrough applications –

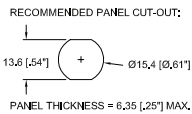
RSF 5 TB



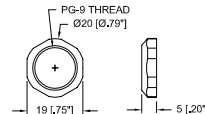
Front View



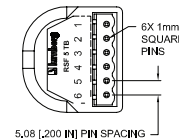
Side View



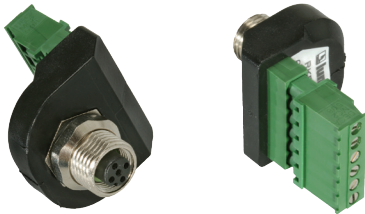
Recommended Panel
Cut-Out



Panel Nut Dimensions



Rear View

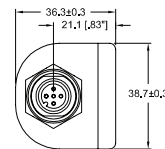


Female, 5-Pole to Terminal Block

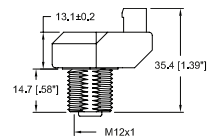
Receptacle, 5-pole, female to terminal block receptacle.

– especially suitable for panel-mount/
feedthrough applications –

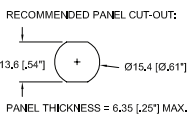
RKF 5 TB



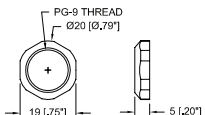
Front View



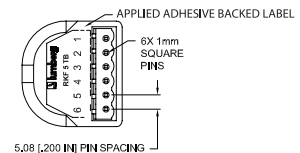
Side View



Recommended Panel
Cut-Out



Panel Nut Dimensions

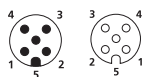


Rear View

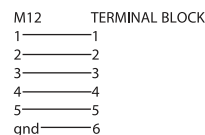
Pin Assignments

Face Views / M12

Male / Female



Wiring Diagram





M12-Receptacle Connectors In Accordance With IEC 61076-2-101
RSF 5 TB | RKF 5 TB

Technical Data

Environmental

Degree of protection IP 67 / NEMA 6P
Operating temperature range -25°C (-13°F) / +90°C (+194°F)

Mechanical

M12 Connector
Shell CuZn, nickel plated
Panel Nut CuZn, nickel plated
Contacts CuZn, gold plated
Insert Polyurethane, black
Sealing Viton

Terminal Block Receptacle
Header Body Polyamide 66, green
Pins CuZn, tin plated
Overmold Polyamide, black

Electrical

Current rating 4 A
Voltage rating 250 V

Recommended Mating Terminal Block
(Lumberg Part Numbers)
MC 200-508-06 90° wire exit (included))

Part Number		Pins	Characteristics
RSF 5 TB	RKF 5 TB	5	