

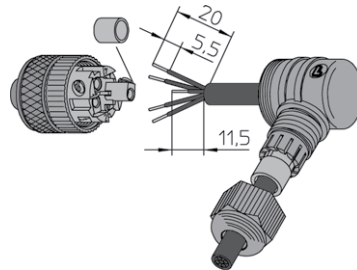
## M12 Field Attachable Connectors

RSCW | RKCW

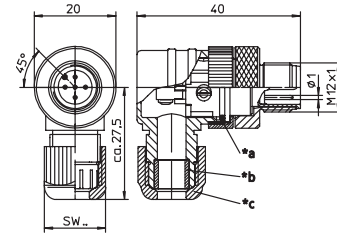


### Male, 3-, 4-, 5-, and 8-Pole (90°)

Field attachable connector, M12 male right angle connector, 3-, 4-, 5-, and 8-pole with threaded joint, assembling with screw terminals.



RSCW

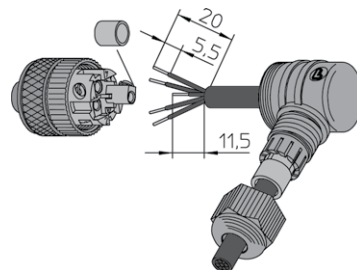


\*a O-Ring  
 \*b gasket  
 \*c cap nut

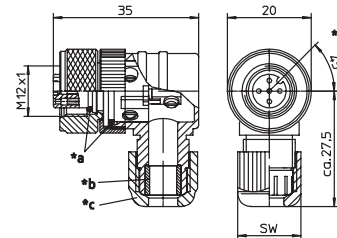


### Female, 3-, 4-, 5-, and 8-Pole (90°)

Field attachable connector, M12 female right angle connector, 3-, 4-, 5-, and 8-pole with threaded joint, assembling with screw terminals.



RKCW

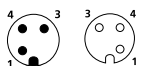


\*a O-Ring  
 \*b gasket  
 \*c cap nut  
 \*d insert 90° rotatable

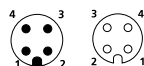
## Pin Assignments

Face Views / M12, Male / Female

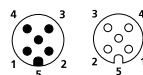
3 pole



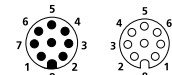
4 pole



5 pole



8 pole





# Be Certain with Belden

## M12 Field Attachable Connectors

RSCW | RKCW

### Technical Data

#### Environmental













Degree of protection IP 67 / NEMA 6P  
 Operating temperature range -25°C (-13°F) / +90°C (+194°F)

#### Mechanical

Housing / Molded body PBT  
 Insert PBT  
 Contact CuZn, pre-coppered, CuSnZn  
 8-poles pre-nickel-plated, gold-plated  
 Receptacle shell CuZn, nickel-plated  
 O-ring FKM  
 Mode of connection Screw terminals  
 Connectable conductor 3-5 poles max. 0.75 mm<sup>2</sup>  
 8 poles max. 0.50 mm<sup>2</sup>

#### Electrical

Contact resistance ≤ 5 mΩ  
 Nominal current at 40°C 3-5 poles 4 A  
 8 poles 2 A  
 Nominal voltage 3-4 poles 240 V  
 5 poles 60 V  
 8 poles 30 V  
 Rated voltage 3-4 poles 250 V  
 5 poles 63 V  
 8 poles 36 V  
 Test voltage 3-4 poles 2.0 kV eff. / 60 s  
 5 poles 1.5 kV eff. / 60 s  
 8 poles 0.9 kV eff. / 60 s  
 Insulation resistance > 10<sup>9</sup> Ω  
 Pollution degree 3

Part Number		Pins	Cable Diameter Range	Characteristics
Male	Female			
RSCW 3/7	RKCW 4/3/7	3	Ø 3.0-6.5 mm /SW 15	 
RSCW 3/9	RKCW 4/3/9		Ø 4.0-8.0 mm /SW 19	 
RSCW 4/7	RKCW 4/7	4	Ø 3.0-6.5 mm /SW 15	 
RSCW 4/9	RKCW 4/9		Ø 4.0-8.0 mm /SW 19	 
RSCW 5/7	RKCW 5/7	5	Ø 3.0-6.5 mm /SW 15	 
RSCW 5/9	RKCW 5/9		Ø 4.0-8.0 mm /SW 19	 
RSCW 8/9	RKCW 8/9	8	Ø 4.0-8.0 mm /SW 19	