

M12-Receptacle Connectors In Accordance With IEC 61076-2-101

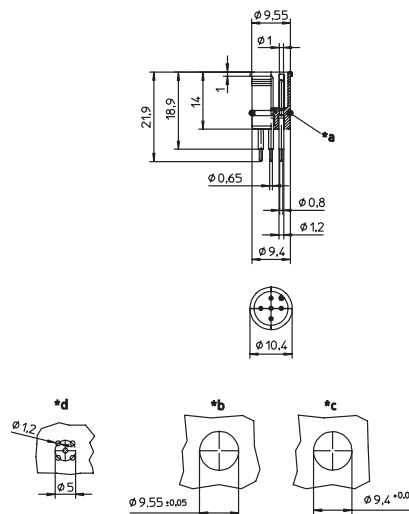
RSEL | RSELP



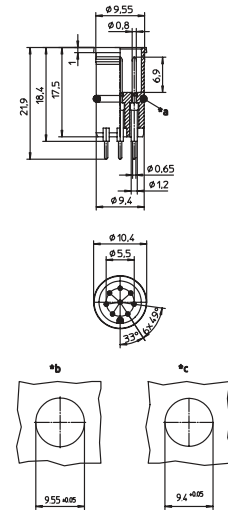
Male, 4-, 5-, and 8-Pole

Receptacle connector, M12 male connector for sensors, solder contacts for printed circuit board mounting.

RSEL

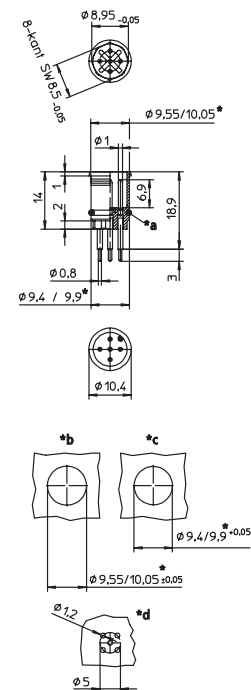


RSEL 8 POLE



- *a O-ring enclosed separately
- *b ventilation hole
- *c cut out with O-ring
- *d cut out without O-ring

RSELP



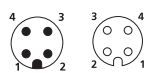
Male, 4- and 8-Pole

Receptacle connector, M12 male connector for sensors, with octagonal shape as antirotation protection, solder contacts for printed circuit board mounting.

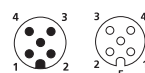
Pin Assignments

Face Views / M12, Male / Female

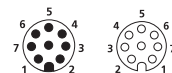
4 pole



5 pole



8 pole





M12-Receptacle Connectors In Accordance With IEC 61076-2-101

RSEL | RSELP

Technical Data

Environmental

Degree of protection	IP 67 / NEMA 6P
Operating temperature range	-25°C (-13°F) / +80°C (+194°F)

Mechanical

Insert	PA
Contact	CuZn, pre-nickel and 0.8 microns gold-plated
O-ring	FKM
Mode of connection	printed circuit board mount

Electrical

Contact resistance	≤ 5 mΩ
Nominal current at 40°C	4–5 poles 4 A 8 poles 2 A
Nominal voltage	4 poles 240 V 5 poles 60 V 8 poles 30 V encapsulated
Rated voltage	4 poles 250 V 5 poles 63 V 8 poles 36 V
Test voltage	4 poles 2.0 kV eff. / 60 s 5–8 poles 1.5 kV eff. / 60 s
Insulation resistance	> 10 ⁹ Ω
Pollution degree	3

Part Number		Pins	Characteristics
RSEL 4	RSELP 4	4	 
RSEL 5	RSELP 5	5	 
RSEL 8		8	 