

M8-Receptacle Connectors In Accordance With IEC 61076-2-104

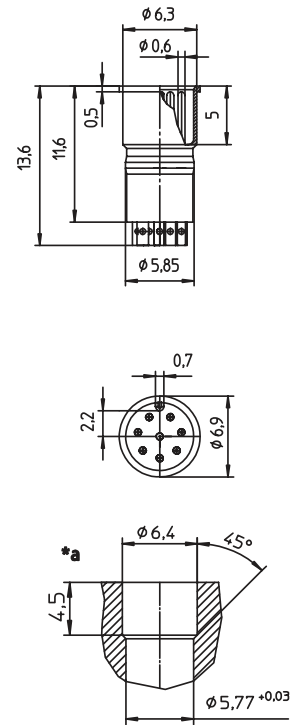
RSEM



Male, 8-Pole

Receptacle connector, M8 male connector for sensors, with long solder contacts, solid contacts on solder side.

RSEM



*a cut out

Pin Assignments

Face Views

M8 - 8 poles





Be Certain with Belden

M8-Receptacle Connectors In Accordance With IEC 61076-2-104
RSEM

Technical Data

Environmental

Degree of protection IP 67 / NEMA 6P
 Operating temperature range -25°C (-13°F) / +80°C (+176°F)

Mechanical

Insert PA
 Contact CuZn, pre-nickel and 0.8 microns gold-plated
 Mode of connection solder connection

Electrical

Nominal current at 40°C 1 A
 Nominal voltage 32 V
 Test voltage 0.8 kV eff. / 60 s
 Insulation resistance > 10⁹ Ω
 Pollution degree 3

Receptacles

Part Number	Pins	Contact (soldering side)	Characteristics
RSEM 8	8	solid contact	

