

M12-Receptacle Connectors In Accordance With IEC 61076-2-101

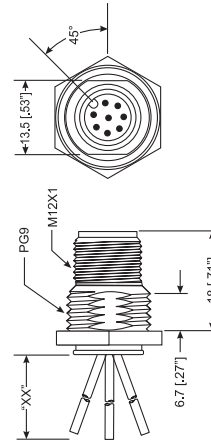
RSF S3103 | RKF S3103



Male, 3-, 4-, 5- and 8-Pole

Receptacle, 3-, 4-, 5- and 8-pole, male, M12 for back mounting, 24 and 22 AWG, panel mount thread PG9.

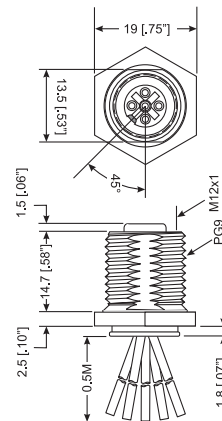
RSF S3103



Female, 3-, 4-, 5- and 8-Pole

Receptacle, 3-, 4-, 5- and 8-pole, female, M12 for back mounting, 24 and 22 AWG, panel mount thread PG9.

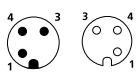
RKF S3103



Pin Assignments

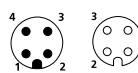
Face Views / M12, Male / Female

3 pole



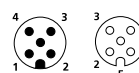
1 = brown
2 = n.c.
3 = blue
4 = black

4 pole



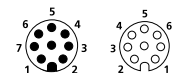
1 = brown
2 = white
3 = blue
4 = black

5 pole



1 = brown
2 = white
3 = blue
4 = black
5 = gray

8 pole



1 = white
2 = brown
3 = green
4 = yellow
5 = grey
6 = pink
7 = blue
8 = red



Be Certain with Belden

M12-Receptacle Connectors In Accordance With IEC 61076-2-101 RSF S3103 | RKF S3103

Technical Data

Environmental

Degree of protection IP 67 / NEMA 6P
 Operating temperature range -25°C (-13°F) / +90°C (+194°F)

Mechanical

Housing Brass, nickel-plated
 Insert PUR, black (female)
 3-, 4- and 5-Pole: Nylon, black (male)
 8-Pole: PUR, black (male)
 Contact Brass, gold over nickel-plated

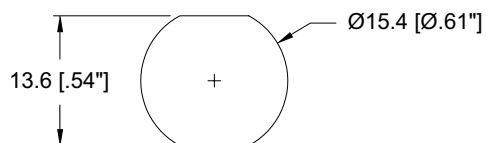
Electrical

Current rating 3-5 Pole: 4 A
 8 Pole: 1.5 A
 Voltage rating 3-4 Pole: 250 V
 5 Pole: 60V
 8 Pole: 30 V / 36 V DC

Accessories

Panel nut (RSKF 9)

Recommended Panel Cutout



Part Number	Pins	Characteristics
RSF 3-S3103/0.5 M RKF 4-3-S3103/0.5 M	3	
RSF 4-S3103/0.5 M RKF 4-S3103/0.5 M	4	
RSF 5-S3103/0.5 M RKF 5-S3103/0.5 M	5	
RSF 8-S3103/0.5 M RKF 8-S3103/0.5 M	8	