

M12-Receptacle Connectors In Accordance With IEC 61076-2-101

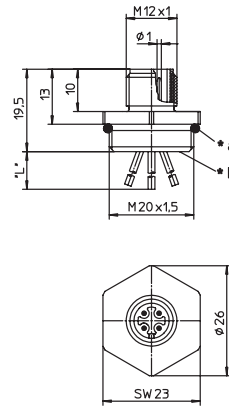
RSFM.../20/0.5 M | RKFM.../20/0.5 M



Male, 3-, 4-, 5- and 8-Pole

M12 Receptacle connector, combined FIXCON/ M12 male connector for front mounting, assembled stranded wire, solder contacts potted with epoxy, chassis side thread M20 x 1.5 (panel nut RSKFM 20).

RSFM.../20/0.5 M



*a O-ring enclosed separately

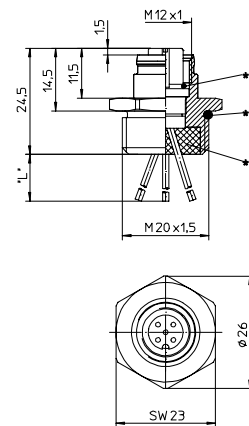
*b solder contacts potted with epoxy
*L*0.5 m



M12 Female, 3-, 4-, and 5-Pole

M12 Receptacle connector, combined FIXCON/ M12 female connector for front mounting, assembled stranded wire, solder contacts potted with epoxy, chassis side thread M20 x 1.5 (panel nut RSKFM 20).

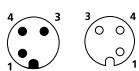
RKFM.../20/0.5 M



Pin Assignments

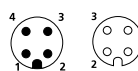
Face Views / M12, Male / Female

3 pole



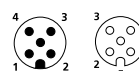
1 = brown
3 = blue
4 = black

4 pole



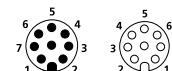
1 = brown
2 = white
3 = blue
4 = black

5 pole



1 = brown
2 = white
3 = blue
4 = black
5 = green/yellow

8 pole



1 = white
2 = brown
3 = green
4 = yellow
5 = grey
6 = pink
7 = blue
8 = red



M12-Receptacle Connectors In Accordance With IEC 61076-2-101

RSFM.../20/0.5 M | RKFM.../20/0.5 M

Technical Data

Environmental







Degree of protection IP 67 / NEMA 6P
Operating temperature range -25°C (-13°F) / +80°C (+176°F)

Mechanical

Housing CuZn
Surface housing Cu/Ni
Contact bearer PA 6/66
Contact CuZn
Contact surface Cu/Au
O-ring Neoprene

Electrical

Operating voltage 240 V, 3 and 4 poles
60 V, 5 poles
30 V, 8 poles
Rated voltage 250 V, 3 and 4 poles
63 V, 5 poles
36 V, 8 poles
Rated current 4 A, 3 - 5 poles
1,5 A, 8 poles
Rated impulse voltage 2,0 kV, 3 and 4 poles
1,5 kV, 5 and 8 poles
Pollution degree 3
Insulation resistance > 10⁹ Ω
Contact resistance ≤ 5 mΩ

Part Number	Pins	Lead (mm ²)	Characteristics
RSFM 3/20/0.5 M	3	0.34	 
RSFM 4/20/0.5 M	4	0.34	 
RSFM 5/20/0.5 M RKFM 5/20/0.5 M	5	4 x 0.34 / 1 x 0.50	 
RSFM 8/20/0.5 M	3	0.34	