



RSWF5-PCB | RKWF5-PCB

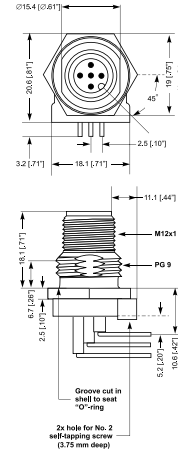


DeviceNet Receptacles, M12 PCB

5-Pole, Male

DeviceNet, 5-pole, male M12 receptacle, 90° PCB mount, PG9 panel cut-out.

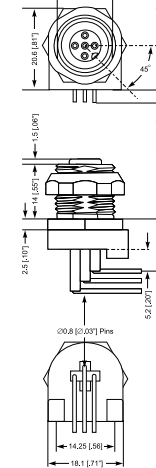
RSWF5-PCB



5-Pole, Female

DeviceNet, 5-pole, female M12 receptacle, 90° PCB mount, PG9 panel cut-out.

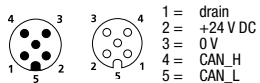
RKWF5-PCB



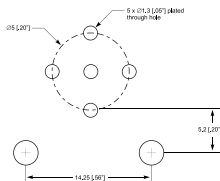
Pin Assignments

Face Views, M12

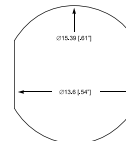
5 pole



Recommended PCB Pattern



Recommended Panel Cutout





Be Certain with Belden

DeviceNet Receptacles, M12 PCB

RSWF5-PCB | RKWF5-PCB

Technical Data

Environmental

Degree of protection IP 67 / NEMA 6P
 Operating temperature range -25°C (-13°F) / +90°C (+194°F)

Materials

Contact Solid, machined brass
 Gold over nickel plating per DN specifications
 Insert RSWF 5-PCB: Nylon, black
 RKWF 5-PCB: PUR, black
 Shell Brass, nickel plated
 Coupling nut Brass, nickel plated

Mechanical

O-ring viton
 PCB mount 5-pin insertion with hole for 2 self-tapping screw in base

Electrical

Current rating 4A
 Voltage rating 250 V

Part Number		Pins	Characteristics
Male	Female		
RSWF5-PCB		5	
	RKWF5-PCB	5	