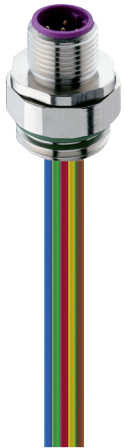




## PROFIBUS Receptacle Connectors

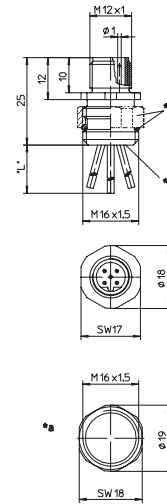
0976 PMC 151



### M12 Male

Receptacle connector, M12 male connector for front mounting, 5 poles, B coding, adjustable, assembled stranded wire, solder contacts potted with epoxy, chassis side thread M16 x 1.5.

– especially suitable for Profibus –



\*a Adjustable nut and o-ring enclosed separately  
 \*b solder contacts potted with epoxy  
 \*L"0,5 m

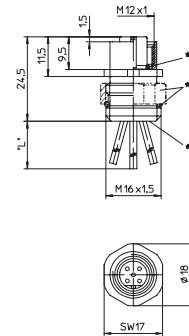
0976 PFC 151



### M12 Female

Receptacle connector, M12 female connector for front mounting, 5 poles, B coding, adjustable, assembled stranded wire, solder contacts potted with epoxy, chassis side thread M16 x 1.5.

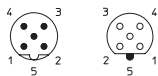
– especially suitable for Profibus –



\*a O-Ring  
 \*b adjustable nut and o-ring enclosed separately  
 \*c solder contacts potted with epoxy  
 \*L"0,5 m

## Pin Assignment

### M12 - 5 Poles (B-Coding)



- 1 = brown
- 2 = green
- 3 = blue
- 4 = red
- 5 = green/yellow

Contact 5 leading



Be Certain with Belden

**PROFIBUS Receptacle Connectors**

0976 PMC 151 | 0976 PFC 151

**Technical Data**

**Environmental**



Degree of protection IP 67 / NEMA 6P  
 Operating temperature range -25°C (-13°F) / +80°C (+176°F)

**Mechanical**

Housing / Molded body CuZn, nickel-plated  
 Insert TPU, self-extinguishing  
 Contact CuZn, pre-nickeled and 0.8 microns gold-plated  
 O-ring FKM  
 Adjustable nut CuZn, nickel-plated

**Electrical**

Contact resistance ≤ 5 mΩ  
 Nominal current at 40°C 4 A  
 Nominal voltage 60 V  
 Test voltage 1.5 kV eff. / 60 s  
 Insulation resistance > 10<sup>9</sup> Ω  
 Pollution degree 3

Part Number	Pins	
0976 PMC 151	5B	 
0976 PFC 151	5B	